

PROTOCOL: LUMBAR OR SACRAL NEUROGRAM/PLEXUS

COIL: High channel count (12+) body array coil

POSITIONING: SUPINE

CLINICAL INDICATIONS/ HISTORY: NEURALGIA, NERVE IMPINGEMENT, MASS, INJURY, SHOOTING PAIN, NUMBNESS

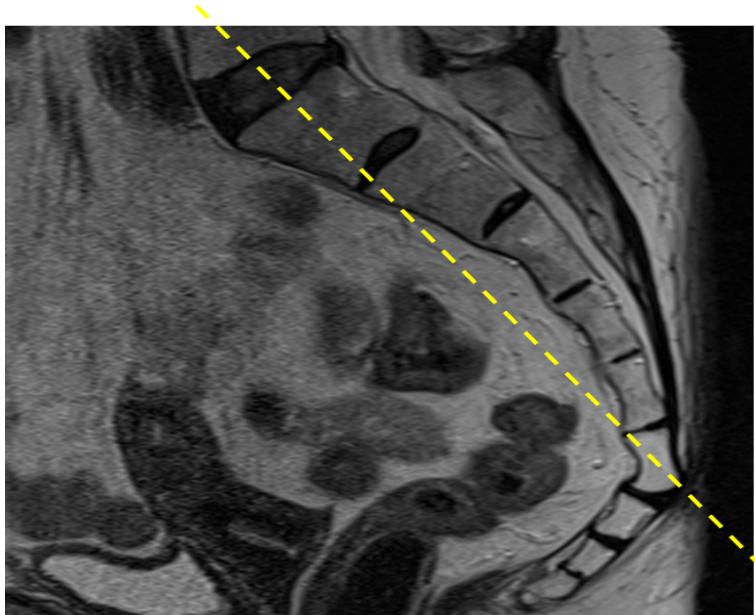
PLOTTING: Oblique coronal/oblique axial - plot similar to sacrum
Whole pelvis sequences = true axial/coronal
True sagittal

COVERAGE: IF LUMBAR PLEXUS ONLY: L1 vertebral body to inferior sacrum
IF SACRAL PLEXUS ONLY: L4 vertebral body to below coccyx
Back of spinal canal to front of pubic symphysis

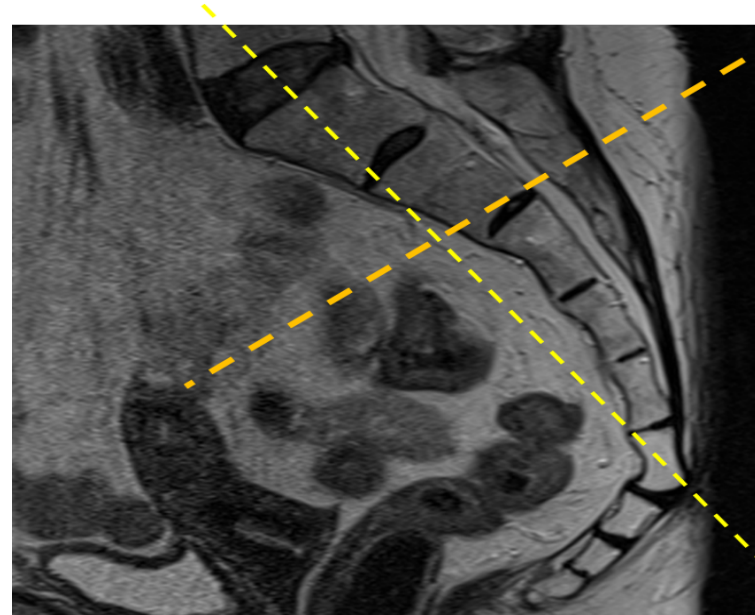
TIPS: Use interpolation. Empty bladder immediately before scan

SCAN ORDER	PLANE	IMAGE CONTRAST/WEIGHTING	MODE/SEQ TYPE	Averages (NEX)	BW (Hz/pixel)	ETL	TR RANGE	TE RANGE	TI	FLIP ANGLE	SLICE/GAP (mm)	FOV (cm)	Resolution	Phase Axis	Send to PACS	Fat sat
1	Whole pelvis AX	STIR	2D/FSE	1	150-180	8-12	3500-6000	20-30	140-150	>130	5/0.5	30-42	512 x 256	RL	FULL SERIES	
2	Whole pelvis COR	T1	2D/FSE	1	150-180	2-3	450-650	8-10		>130	5/0.5	36-44	512 x 256	SI	FULL SERIES	NONE
3	COR OBL	PD	2D/FSE	2	150-180	8-12	3500-6000	38-45		>130	3.5/0	20-24	512 x 384-320	SI	FULL SERIES	NONE
4	COR OBL	3D-DESS	3D/GR	1	100-150	2	20-30	8-10		25-35	2.2	20-24	384x384-512x512		FULL SERIES	WATER EXCITATION
5	COR OBL	T2FS - SPAIR	2D/FSE	1	150-180	8-12	3500-6000	65-75		>130	3.5/0	20-24	256 x 256	SI	FULL SERIES	WEAK
6	True AX	PD	2D/FSE	1	150-180	8-12	3500-6000	38-45		>130	3.5/0	20-24	512 x 384-320	AP	FULL SERIES	NONE
7	SAG	PD	2D/FSE	1	150-180	8-12	3500-6000	38-45		>130	3.5/0	20-24	512 x 384-320	SI	FULL SERIES	NONE
IF WO/W PRE-GAD: 7	AX OBL	T1FS	2D/FSE	1	150-180	2-3	450-650	8-10		>130	4/0	20-24	256 X 256	AP	FULL SERIES	WEAK
GIVE CONTRAST																
POST-GAD: 8	AX OBL	T1FS	2D/FSE	1	150-180	2-3	450-650	8-10		>130	4/0	20-24	256 X 256	AP	FULL SERIES	WEAK
POST-GAD: 9	COR OBL	T1FS	2D/FSE	1	150-180	2-3	450-650	8-10		>130	4/0	20-24	256 x 256	SI	FULL SERIES	WEAK

GRAPPA-2



CORONAL OBLIQUE SACRAL PLEXUS PLOTTING



AXIAL OBLIQUE SACRAL PLEXUS PLOTTING