

PROTOCOL: HAND WO ROUTINE

COIL: Dedicated hand/wrist coil. If not present, small flex coil (4-16 CH) wrapped around.

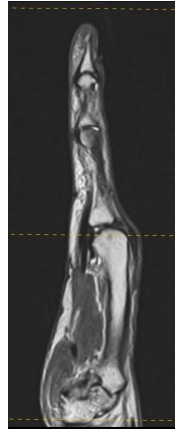
POSITIONING: Fingers straight. Pad fingers dorsal and volar so they cannot move. Superman or arm at side. If arm at side careful attention to avoid phase wrap. Extra effort to make patient comfortable.

CLINICAL INDICATIONS/HISTORY: HAND PAIN, FRACTURE, LIGAMENT TEAR, TENDON TEAR, ARTHRITIS, INJURY, CONTRACTURE, VOLAR PLATE TEAR

PLOTTING: Axial FIRST off of coronal and sagittal localizers. True axial to hand = sigmoid notch distal radius to dorsal/radial corner of styloid
 Coronal = perpendicular to coronal
 Sagittal = perpendicular to coronal

COVERAGE: May vary depending on area of involvement. Approx carpus to fingers

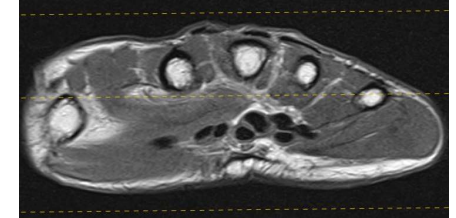
TIPS: Note that finger motion causes artifactual signal in tendons



sagittal hand image showing axial plane alignment and coverage limits



coronal hand showing sagittal plane alignment and coverage limits



axial hand showing coronal plane alignment and coverage limits

SCAN ORDER	PLANE	IMAGE CONTRAST/WEIGHTING	MODE/SEQ TYPE	Averages (NEX)	BW (Hz/pixel)	ETL	TR RANGE	TE RANGE	TI	FLIP ANGLE	SLICE/GAP (mm)	FOV (cm)	Resolution	Phase Axis	Send to PACS	Fat sat
1	AX	T2FS	2D/FSE	1	150-180	8-12	3500- 6000	65-75		>130	3.0/0	8-12	256 x 256	RL	FULL SERIES	WEAK
2	AX	PD	2D/FSE	2	150-180	8-12	3500- 6000	38-45		>130	3.0/0	8-12	512 X 320	RL	FULL SERIES	NONE
3	COR	PDFS	2D/FSE	1	150-180	8-12	3500- 6000	38-45		>130	1.5-2.0	8-12	256 X 256	SI	FULL SERIES	WEAK
4	COR	PD	2D/FSE	2	150-180	8-12	3500- 6000	38-45		>130	1.5-2.0	8-12	512 x 320-384	SI	FULL SERIES	NONE
5	COR	T1	2D/FSE	1	150-180	2-3	450-650	8-10		>130	1.5-2.0	8-12	256 x 192	SI	FULL SERIES	NONE
6	SAG	PD	2D/FSE	1	150-180	8-12	3500- 6000	38-45		>130	3.0/0	8-12	512 x 320	SI	FULL SERIES	NONE