

**PROTOCOL: HIP ROUTINE**

**COIL:** High channel count (12+) body array coil

**POSITIONING:** Supine. Hip INTERNAL ROTATION - sandbag lateral to foot / or tape toes of both feet together with sandbag between heels

**CLINICAL INDICATIONS/HISTORY:** HIP PAIN, INTERNAL DERANGEMENT, LABRAL TEAR, IMPINGEMENT, INJURY, TENDON TEAR, LIGAMENT INJURY, ARTHRITIS, OSTEONECROSIS

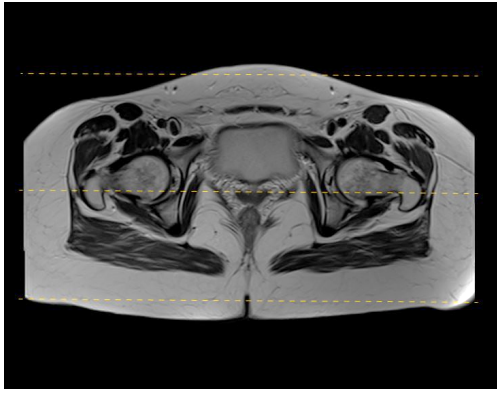
**PLOTTING:** On whole pelvis sequences - true axial and true coronal Unilateral coronal and sagittal = true coronal, true sagittal Unilateral oblique axial = LONG AXIS of femoral neck (off coronal)

**COVERAGE:** Whole pelvis coronal: Entire pubic symphysis, entire sacrum/coccyx Whole pelvis axial: Above iliac crest to below lesser trochanter Unilateral: Anterior to pubic symphysis, posterior to ischial tuberosity Unilateral: Lateral to greater trochanter, medial to ischial tuberosity & joint

**TIPS:**

Use interpolation. On Siemens use "seatbelt" straps to bring coil close to lateral thighs Have patient empty bladder immediately before start of scan

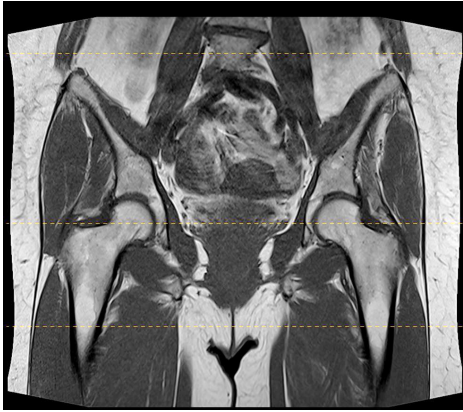
SCAN ORDER	PLANE	IMAGE CONTRAST/WEIGHTING	MODE/SEQ TYPE	Averages (NEX)	BW (Hz/pixel)	ETL	TR RANGE	TE RANGE	TI	FLIP ANGLE	SLICE/GAP (mm)	FOV (cm)	Resolution	Phase Axis	Send to PACS	Fat sat
1	Whole pelvis AX	STIR	2D/FSE	1	150-180	8-12	3500-6000	20-30	140 - 150	>130	5/0.5	30-42	512 x 256	RL	FULL SERIES	
2	Whole pelvis COR	T1	2D/FSE	1	150-180	2-3	450-650	8-10		>130	5/0.5	36-44	512 x 256	SI	FULL SERIES	NONE
3	COR	PD	2D/FSE	2	150-180	8-12	3500-6000	38-45		>130	3.5/0	18-20	512 X 352-384	SI	FULL SERIES	NONE
4	SAG	PDFS	2D/FSE	1	150-180	8-12	3500-6000	38-45		>130	3.5/0	18-20	256 X 256	AP	FULL SERIES	WEAK
5	SAG	PD	2D/FSE	2	150-180	8-12	3500-6000	38-45		>130	3.5/0	18-20	512 X 320-384	AP	FULL SERIES	NONE
6	AX OBL	PDFS	2D/FSE	1	150-180	8-12	3500-6000	38-45		>130	3.5/0	18-20	320 X 288	AP	FULL SERIES	WEAK
IF WO/W PRE-GAD: 6	AX	T1FS	2D/FSE	1	150-180	2-3	450-650	8-10		>130	3.5/0	18-20	256 X 256	RL	FULL SERIES	WEAK
GIVE CONTRAST																
POST-GAD: 7	AX	T1FS	2D/FSE	1	150-180	2-3	450-650	8-10		>130	3.5/0	18-20	256 X 256	RL	FULL SERIES	WEAK
POST-GAD: 8	COR or SAG	T1FS	2D/FSE	1	150-180	2-3	450-650	8-10		>130	3.5/0	18-20	256 x 256	SI	FULL SERIES	WEAK



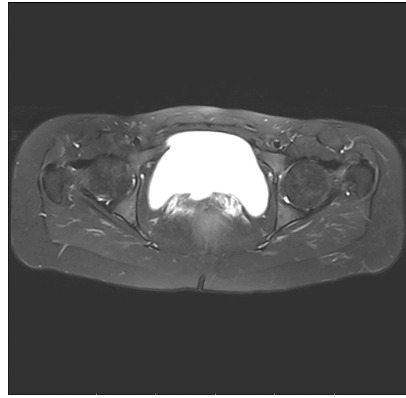
COVERAGE FOR CORONAL T1



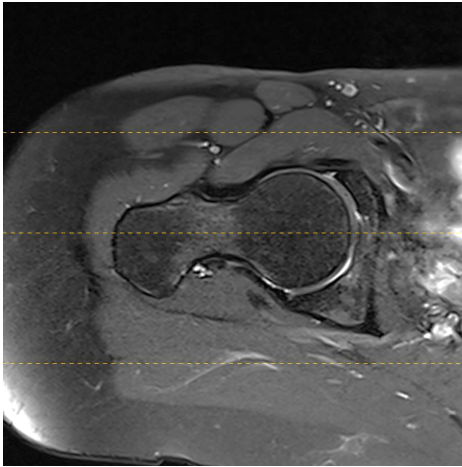
EXAMPLE OF CORONAL T1 AND FOV COVERAGE



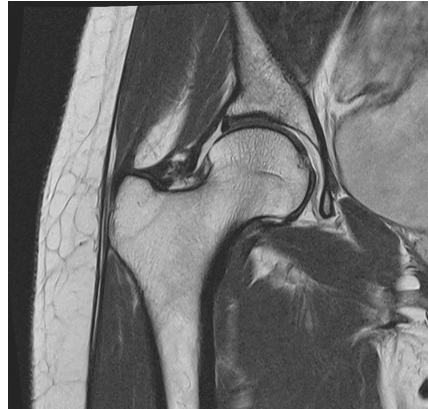
COVERAGE FOR AXIAL T2FS/STIR



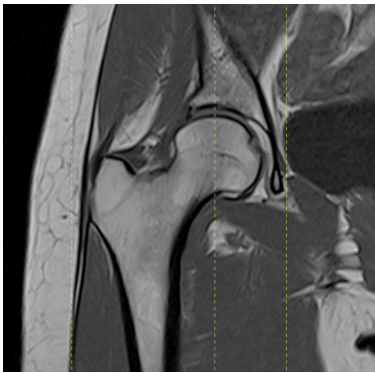
EXAMPLE OF AXIAL T2FS/STIR AND FOV COVERAGE



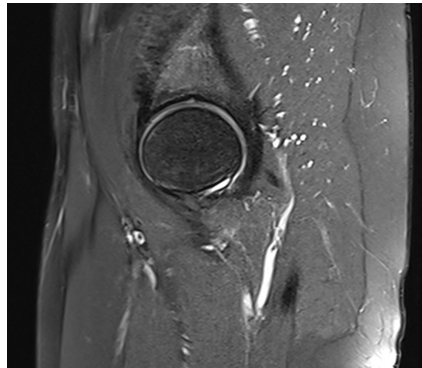
ALIGNMENT AND COVERAGE FOR SAG PD FS



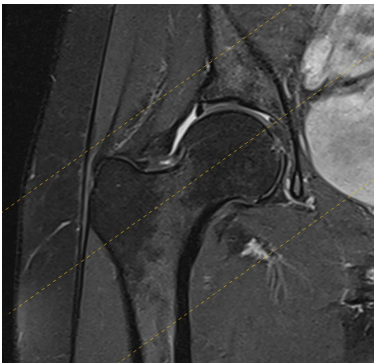
CORONAL PD SFOV EXAMPLE AND FOV COVERAGE



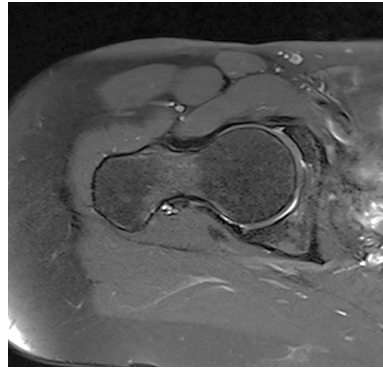
ALIGNMENT AND COVERAGE FOR SAG PD FS



EXAMPLE OF SAG PD FS AND FOV COVERAGE



ALIGNMENT AND COVERAGE FOR OBLAX PD FS



EXAMPLE OF OBLAX PD FS AND FOV COVERAGE