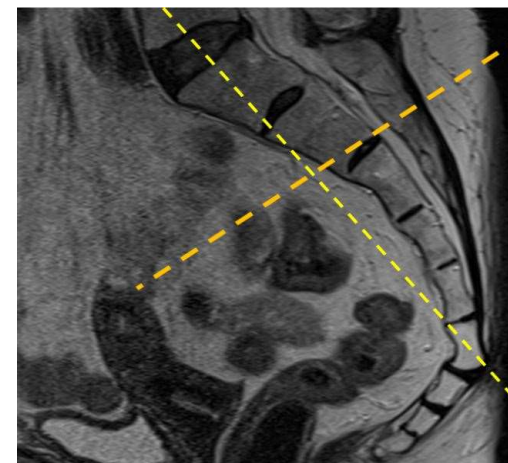
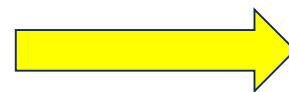


**PROTOCOL: LUMBAR OR SACRAL PLEXUS WWO OR WO \*\*SEE IMAGE GUIDANCE\*\***

<b>COIL:</b>	High channel count (12+) body array coil (include posterior elements if spine coils are in table)
<b>POSITIONING:</b>	SUPINE. PELVIS FLAT ON TABLE AND LONG AXIS OF PATIENT ALIGNED STRAIGHT TO LONG AXIS OF TABLE.
<b>CLINICAL INDICATIONS/ HISTORY:</b>	NEURALGIA, NERVE IMPINGEMENT, MASS, INJURY, SHOOTING PAIN, NUMBNESS
<b>PLOTTING:</b>	Oblique coronal/oblique axial - plot similar to sacrum True sagittal Whole pelvis sequences = true axial/coronal
<b>COVERAGE:</b>	IF LUMBAR PLEXUS ONLY: L1 vertebral body to inferior sacrum SACRAL PLEXUS ONLY: L4 vertebral body to below coccyx Back of spinal canal to front of pubic symphysis
<b>TIPS:</b>	Empty bladder immediately before scan; use sagittal sacrum S1--S5 for reference for coronal and axial plane angulation (see below)

OBLIQUE CORONAL AND AXIAL PLANES SHOWN ON MIDLINE SAGITTAL IMAGE



SCAN ORDER	PLANE	IMAGE CONTRAST/WEIGHTING	MODE/SEQ TYPE	Averages (NEX)	BW (Hz/pixel)	ETL	TR RANGE	TE RANGE	TI	FLIP ANGLE	SLICE/GAP (mm)	FOV (cm)	Resolution	Phase Axis	Send to PACS	Fat sat
1	Whole pelvis AX	STIR	2D/FSE	1	150-180	8-12	3500-6000	20-30	140 - 150	>130	5/0.5	30-42	256 x 256	RL	FULL SERIES	
2	Whole pelvis COR	T1	2D/FSE	1	150-180	2-3	450-650	8-10		>130	5/0.5	36-44	256 x 256	SI	FULL SERIES	NONE
3	COR OBL	PD	2D/FSE	2	150-180	8-12	3500-6000	38-45		>130	4/0	20-24	512-384 x 320	SI	FULL SERIES	NONE
4	COR OBL	T2FS - SPAIR	2D/FSE	1	150-180	8-12	3500-6000	65-75		>130	4/0	20-24	256 x 256	SI	FULL SERIES	WEAK
5	AX OBL	T1	2D/FSE	1	150-180	2-3	450-650	8-10		>130	4/0	20-24	256 x 256	AP	FULL SERIES	NONE
6	SAG	T2	2D/FSE	1	150-180	8-12	3500-6000	65-75		>130	4/0	20-24	384-320 x 288	SI	FULL SERIES	NONE
IF WO/W PRE-GAD: 7	AX OBL	T1FS	2D/FSE	1	150-180	2-3	450-650	8-10		>130	4/0	20-24	256 X 256	AP	FULL SERIES	WEAK

**GIVE CONTRAST**

POST-GAD: 8	AX OBL	T1FS	2D/FSE	1	150-180	2-3	450-650	8-10		>130	4/0	20-24	256 X 256	AP	FULL SERIES	WEAK
POST-GAD: 9	COR OBL	T1FS	2D/FSE	1	150-180	2-3	450-650	8-10		>130	4/0	20-24	256 x 256	SI	FULL SERIES	WEAK