

PROTOCOL: MSK PELVIS WO

COIL: High channel count (12+) body array coil

POSITIONING: Supine. Hip INTERNAL ROTATION - sandbag lateral to foot / or tape toes of both feet together with sandbag between heels

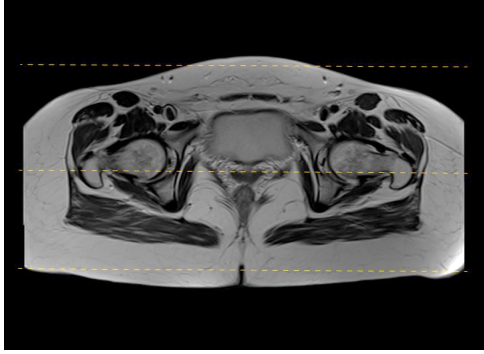
CLINICAL INDICATIONS/ HISTORY: PAIN, ARTHRITIS, INJURY NOT SPECIFIC TO HIP, SACRUM, OR PUBIC BONE

PLOTTING: True axial, sagittal, coronal

COVERAGE:
 Coronal: Entire pubic symphysis to entire sacrum/coccyx
 Axial: Above iliac crest to below lesser trochanter
 Sagittal: From lateral to L great trochanter to lateral to R greater trochanter

TIPS:
 On Siemens use "seatbelt" straps to bring coil close to lateral thighs
 Have patient empty bladder immediately before start of scan

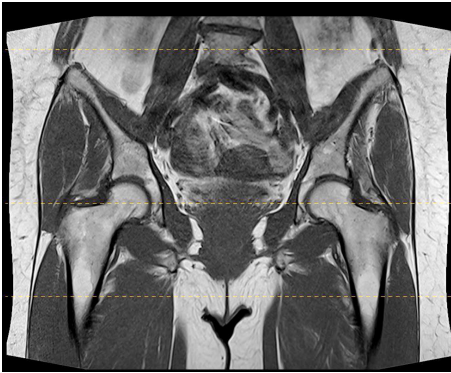
SCAN ORDER	PLANE	IMAGE CONTRAST/WEIGHTING	MODE/SEQ TYPE	Averages (NEX)	BW (Hz/pixel)	ETL	TR RANGE	TE RANGE	TI	FLIP ANGLE	SLICE/GAP (mm)	FOV (cm)	Resolution	Phase Axis	Send to PACS	Fat sat
1	AX	T2FS	2D/FSE	1	150-180	8-12	3500-6000	65-75		>130	5/0.5	30-42	256 x 256	AP	FULL SERIES	WEAK
2	AX	T1	2D/FSE	1	150-180	2-3	450-650	8-10		>130	5/0.5	30-42	256 x 256	AP	FULL SERIES	NONE
3	COR	STIR	2D/FSE	1	150-180	8-12	3500-6000	20-30	140 - 150	>130	5/0.5	36-44	256 X 256	SI	FULL SERIES	
4	COR	T1	2D/FSE	1	150-180	2-3	450-650	8-10		>130	5/0.5	36-44	256 x 256	SI	FULL SERIES	NONE
5	SAG	STIR	2D/FSE	1	150-180	8-12	3500-6000	20-30	140 - 150	>130	5/0.5	24-36	256 x 256	SI	FULL SERIES	
6	SAG	T1	2D/FSE	1	150-180	2-3	450-650	8-10		>130	5/0.5	24-36	256 x 256	SI	FULL SERIES	NONE
ALTERNATE OPTIONS																
1A	AX	STIR	2D/FSE	1	150-180	8-12	3500-6000	20-30	140 - 150	>130	5/0.5	30-42	256 x 256	AP	FULL SERIES	



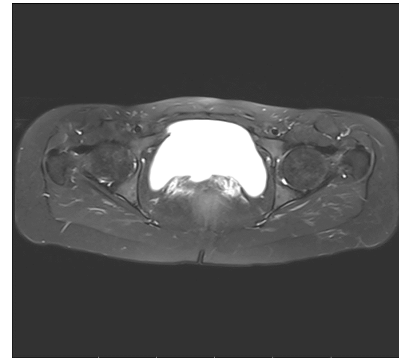
COVERAGE FOR CORONAL T1



EXAMPLE OF CORONAL T1 AND FOV COVERAGE



COVERAGE FOR AXIAL T2FS/STIR



EXAMPLE OF AXIAL T2FS/STIR AND FOV COVERAGE