

PROTOCOL: PECTORALIS WO ROUTINE

COIL: HIGH CHANNEL COUNT (12+) BODY ARRAY OR (8+) FLEX COIL; COIL-IN-TABLE SYSTEMS MAY USE POSTERIOR ARRAY COIL ELEMENTS

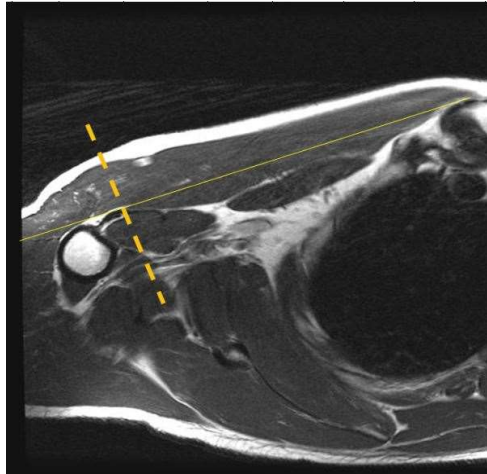
POSITIONING: Supine. Similar to shoulder - arm at side in neutral (thumb up) position

CLINICAL INDICATIONS/HISTORY: PECTORALIS TENDON/MUSCLE TEAR

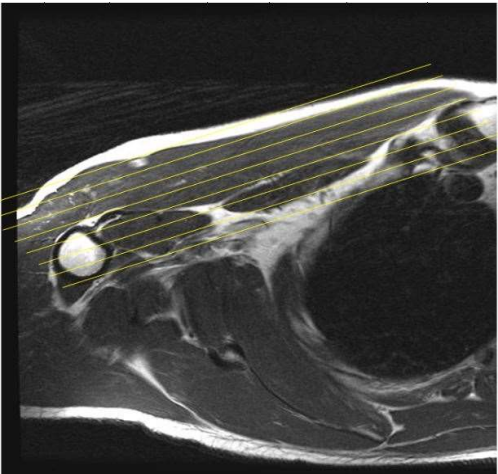
PLOTTING: UNILATERAL ONLY
true axial = parallel/perpendicular to pectoralis major muscle
Axial= Coronal/sagittal

COVERAGE: MUST include proximal 1/3 of humerus (entire pectoralis tendon insertion)
Include sternal origin if possible (not as vital as humerus if patient very large)

TIPS: Pectoralis tear most commonly located either at distal muscle-tendon-junction, or at site of tendon insertion on bone



OBLIQUE CORONAL AND SAGITTAL PLANES SHOWN ON AXIAL IMAGE



OBLIQUE CORONAL PLANE WITH COVERAGE EXAMPLE

SCAN ORDER	PLANE	IMAGE CONTRAST/WEIGHTING	MODE/SEQ TYPE	Averages (NEX)	BW (Hz/pixel)	ETL	TR RANGE	TE RANGE	TI	FLIP ANGLE	SLICE/GAP (mm)	FOV (cm)	Resolution (FxP)	Phase Axis	Send to PACS	Fat sat
1	AX	PDFS	2D/FSE	1	150-180	8-12	3500-6000	38-45		>130	3.5/0	20-28	256 x 256	AP	FULL SERIES	WEAK
2	AX	PD	2D/FSE	2	150-180	8-12	3500-6000	38-45		>130	3.5/0	20-28	512 X 320	AP	FULL SERIES	NONE
3	COR	PDFS	2D/FSE	1	150-180	8-12	3500-6000	38-45		>130	3.5/0	20-28	320 x 288	SI	FULL SERIES	WEAK
4	COR	T1	2D/FSE	1	150-180	2-3	450-650	8-10		>130	3.5/0	20-28	256 x 256	SI	FULL SERIES	NONE
5	SAG	T2FS	2D/FSE	1	150-180	8-12	3500-6000	65-75		>130	3.5/0	20-28	256 x 256	SI	FULL SERIES	WEAK