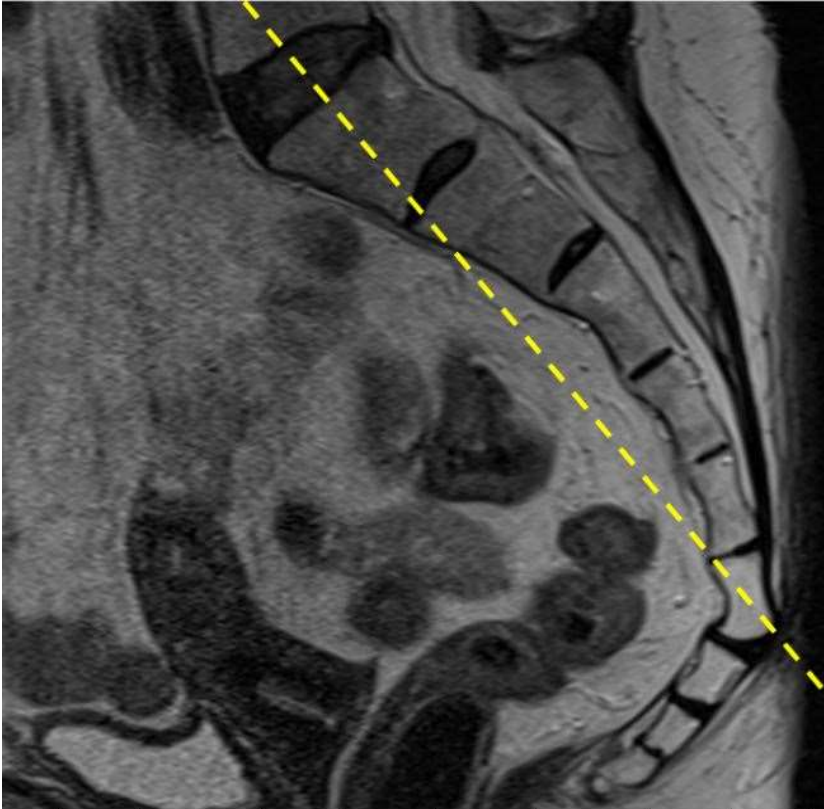
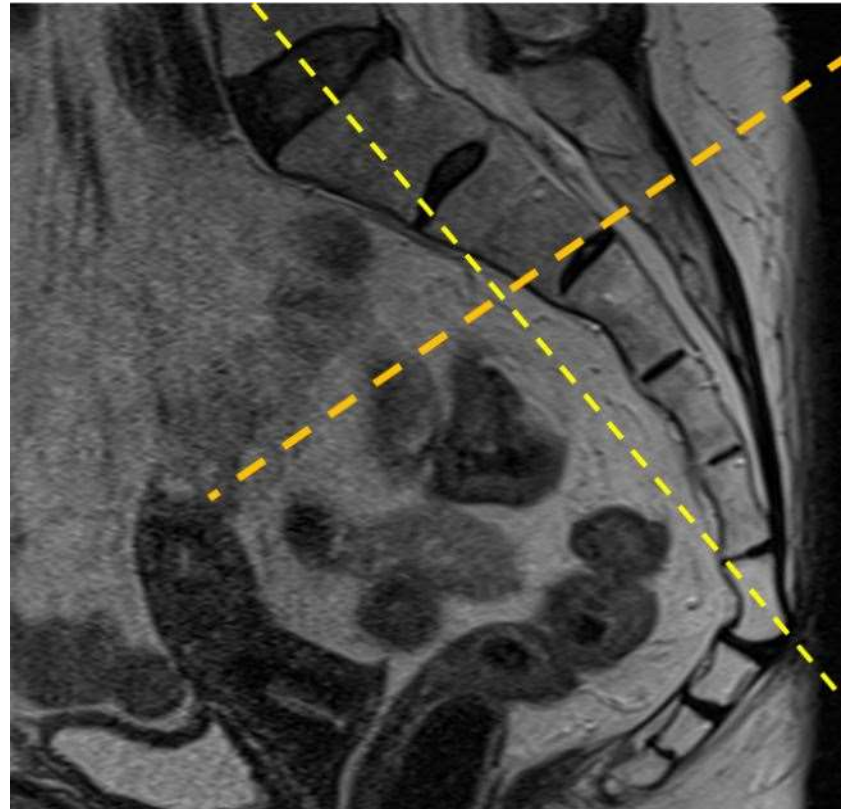


PROTOCOL: SACROILIAC JOINTS-SACRUM/COCCYX WO-ROUTINE**COIL:** POSTERIOR/SPINE ARRAY *ONLY*!! DO NOT USE ANTERIOR ARRAY: IT WILL INCREASE ARTIFACT FROM ABDOMINAL WALL**POSITIONING:** SUPINE. PELVIS FLAT ON TABLE AND LONG AXIS OF PATIENT ALIGNED STRAIGHT TO LONG AXIS OF TABLE.**CLINICAL INDICATIONS/HISTORY:** SACROILIITIS, FRACTURE, SACRUM/COCCYX PAIN, LOW BACK PAIN, DEGENERATIVE DISEASE, INFLAMMATORY ARTHRITIS**PLOTTING:** Sagittal = true sagittal Oblique axial = short axis of sacrum (relative to sagittal)
Oblique coronal = long axis of sacrum (relative to sagittal)**COVERAGE:** Entire sacrum, coccyx, sacroiliac joints**TIPS:** Motion artifact from breathing if anterior coils used

SCAN ORDER	PLANE	IMAGE CONTRAST/WEIGHTING	MODE/SEQ TYPE	Averages (NEX)	BW (Hz/pixel)	ETL	TR RANGE	TE RANGE	TI	FLIP ANGLE	SLICE/GAP (mm)	FOV (cm)	Resolution	Phase Axis	Send to PACS	Fat sat
1	AX OBL	T2FS	2D/FSE	1	150-180	8-12	3500-6000	65-75		>130	5/0	18-24	256 x 256	RL	FULL SERIES	WEAK
2	AX OBL	T1	2D/FSE	1	150-180	2-3	450-650	8-10		>130	5/0	18-24	256 x 256	RL	FULL SERIES	NONE
3	COR OBL	STIR	2D/FSE	1	150-180	8-12	3500-6000	20-30	140 - 150	>130	4.0/0.4	20-24	256 X 256	RL	FULL SERIES	
4	COR OBL	T1	2D/FSE	1	150-180	2-3	450-650	8-10		>130	4.0/0.4	20-24	256 x 256	RL	FULL SERIES	NONE
5	SAG	T2FS	2D/FSE	1	150-180	8-12	3500-6000	65-75		>130	4.0/0.4	20-24	256 x 256	SI	FULL SERIES	WEAK
6	COR OBL	T1 VIBE/LAVA	3D VIBE / LAVA	1	400-480		MIN	In phase = 4.2-4.76		8-25	3/0	22-28	256 x 256	RL	FULL SERIES	



CORONAL PLANE ALIGNMENT FOR SACRUM/S-1 JOINTS



AX AND COR LUMBOSACRAL PLEXUS PLANES SHOWN ON
MIDLINE SAGITTAL IAMGE OF SACRUM