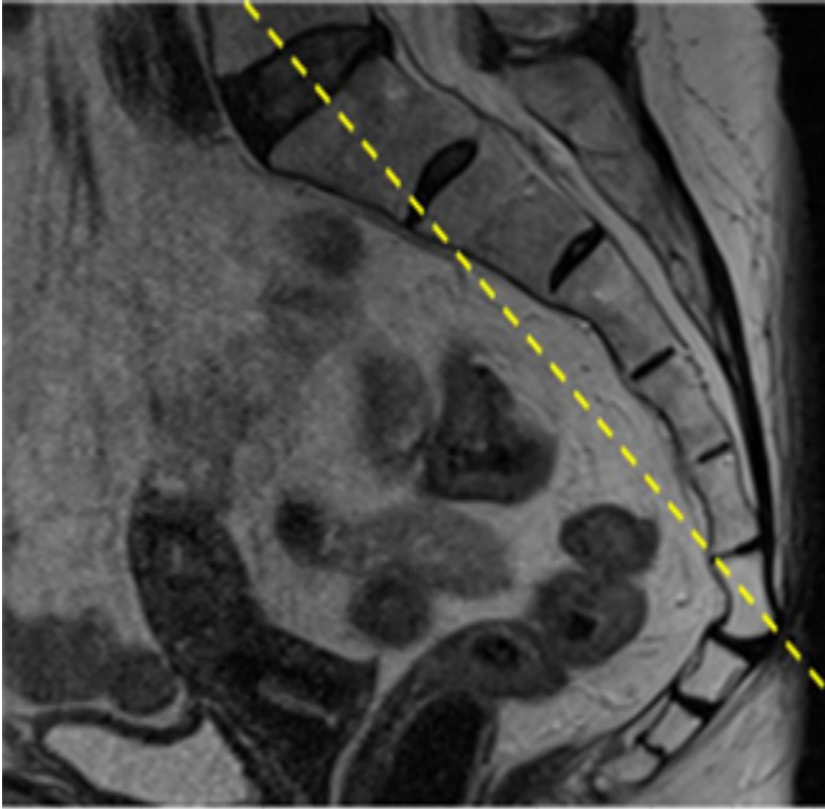


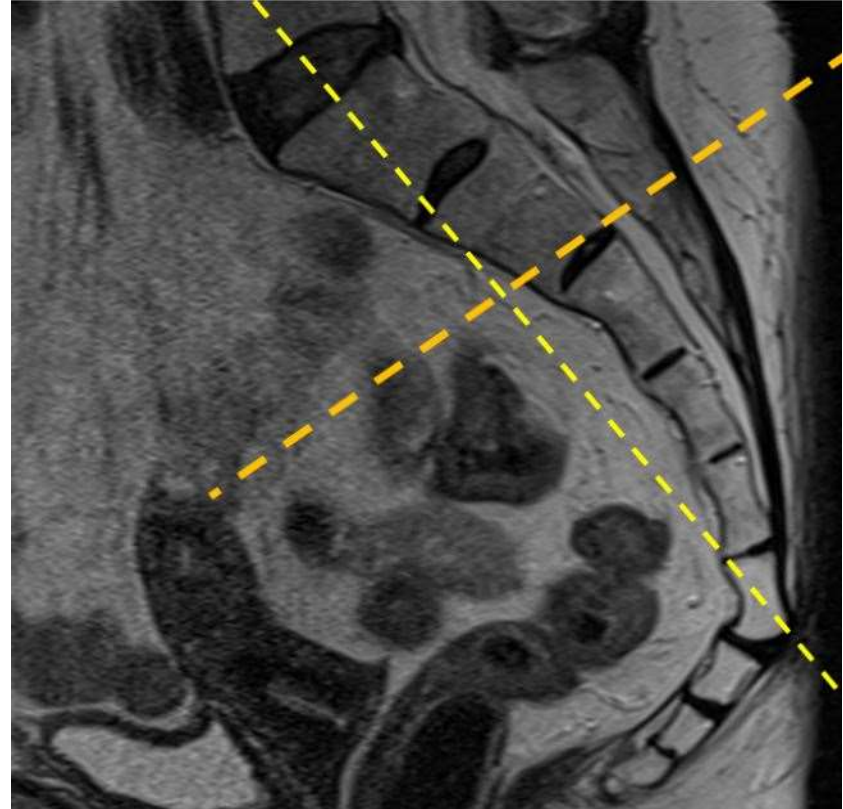
**PROTOCOL: SI JOINTS-SACRUM/COCCYX WWO- OSTEOMYELITIS, MASS**

<b>COIL:</b>	POSTERIOR/SPINE ARRAY *ONLY*!! DO NOT USE ANTERIOR ARRAY: IT WILL INCREASE ARTIFACT FROM ABDOMINAL WALL
<b>POSITIONING:</b>	SUPINE. PELVIS FLAT ON TABLE AND LONG AXIS OF PATIENT ALIGNED STRAIGHT TO LONG AXIS OF TABLE.
<b>CLINICAL INDICATIONS/HISTORY:</b>	SACROILIITIS, FRACTURE, SACRUM/COCCYX PAIN, LOW BACK PAIN, DEGENERATIVE DISEASE, INFLAMMATORY ARTHRITIS
<b>PLOTTING:</b>	Sagittal = true sagittal Oblique axial = short axis of sacrum (relative to sagittal) Oblique coronal = long axis of sacrum (relative to sagittal)
<b>COVERAGE:</b>	Entire sacrum, coccyx, sacroiliac joints
<b>TIPS:</b>	Motion artifact from breathing if anterior coils used

SCAN ORDER	PLANE	IMAGE CONTRAST/WEIGHTING	MODE/SEQ TYPE	Averages (NEX)	BW (Hz/pixel)	ETL	TR RANGE	TE RANGE	TI	FLIP ANGLE	SLICE/GAP (mm)	FOV (cm)	Resolution	Phase Axis	Send to PACS	Fat sat
1	SAG	STIR	2D/FSE	1	150-180	8-12	3500-6000	20-30	140 - 150	>130	5/0.5	20-24	256 x 256	SI	FULL SERIES	
2	SAG	T1	2D/FSE	1	150-180	2-3	450-650	8-10		>130	5/0.5	20-24	256 x 256	SI	FULL SERIES	NONE
3	AX OBL	T2FS	2D/FSE	1	150-180	8-12	3500-6000	65-75		>130	5/0.5	18-24	256 x 256	RL	FULL SERIES	WEAK
4	AX OBL	T1	2D/FSE	1	150-180	2-3	450-650	8-10		>130	5/0.5	18-24	256 x 256	RL	FULL SERIES	NONE
5	COR OBL	STIR	2D/FSE	1	150-180	8-12	3500-6000	20-30	140 - 150	>130	4/0.4	20-24	256 X 256	RL	FULL SERIES	
6	COR OBL	T1	2D/FSE	1	150-180	2-3	450-650	8-10		>130	4/0.4	20-24	256 x 256	RL	FULL SERIES	NONE
IF WO/W PRE-GAD: 7	AX OBL	T1FS	2D/FSE	1	150-180	2-3	450-650	8-10		>130	5/0.5	18-24	256 X 256	RL	FULL SERIES	WEAK
<b>GIVE CONTRAST</b>																
POST-GAD: 8	AX OBL	T1FS	2D/FSE	1	150-180	2-3	450-650	8-10		>130	5/0.5	18-24	256 X 256	RL	FULL SERIES	WEAK
POST-GAD: 9	COR OBL	T1FS	2D/FSE	1	150-180	2-3	450-650	8-10		>130	4/0.4	20-24	256 x 256	SI	FULL SERIES	WEAK



CORONAL PLANE ALIGNMENT FOR SACRUM/S-I JOINTS



AX AND COR LUMBOSACRAL PLEXUS PLANES SHOWN  
ON MIDLINE SAGITTAL IMAGE OF SACRUM